

Submitted by: Chairman of the Assembly at the
Request of the Mayor
Prepared by: Anchorage Water & Wastewater
Utility
For reading: April 28, 1998

CLERK'S OFFICE

APPROVED

Date:

5-19-98

ANCHORAGE, ALASKA

AR NO. 98-141

**A RESOLUTION APPROVING CONSTRUCTION OF THE GRANITE VIEW
SANITARY SEWER EXTENSION (S96-041A), AND PROVIDING FOR THE
EVENTUAL ASSESSMENT AGAINST BENEFITED PROPERTY.**

WHEREAS, Alaska State Statute 42.05.385 and AMC 19.80.010(B) mandate that when a sanitary sewer main line extension will create, or has the potential of creating, any charge or assessment against the adjacent property, the sanitary sewer main extension may not be constructed unless the legislative body of each municipality through which the extension passes has approved the extension.

WHEREAS, the Anchorage Water and Wastewater Utility (AWWU) has received application from a Developer to extend a sanitary sewer main, under AWWU's mainline extension agreement process, to serve property along Claridge Place, North Circle and South Circle, within Granite View Subdivision in Anchorage.

WHEREAS, the extension of the sanitary sewer main will specially benefit and provide sanitary sewer service to an additional five (5) properties (reimbursable properties), and in doing so, will create potential assessments against them.

NOW THEREFORE, THE ANCHORAGE ASSEMBLY RESOLVES:

SECTION 1. It is in the best interest of the community that said sanitary sewer improvement proceed.

SECTION 2. The Developer shall keep, and provide to the AWWU, an accurate account of all costs of the sanitary sewer main improvements.

SECTION 3. Approximate costs for the sanitary sewer main construction have been provided by the Developer and these costs are allocated, to each specially benefited parcel, as estimated on the attached sanitary sewer assessment roll per the AWWU Wastewater Tariff.

SECTION 4. After the sanitary sewer improvements have been completed and AWWU has received and approved the record drawings and certified project costs for the improvements, the Mayor shall cause the computation of all applicable assessment charges. At such time as each of the five reimbursable properties cited on the attached assessment roll connect to the

RETURN TO:
Anchorage Water & Wastewater Utility
Private Development
3000 Arctic Boulevard
Anchorage, Alaska 99503-3898

Page 2
Granite View
S96-041
AR 98-141

sanitary sewer main, the respective pro-rata assessment shall be levied in accordance with Municipal Codes and the AWWU Wastewater Utility Tariff in effect at the time the assessment is levied.

SECTION 5. A Special Assessment Collection Charge, as authorized in Rule 7.4 of the Wastewater Utility Tariff, in effect at the time the assessment is levied, will be charged to those properties identified in this resolution.

SECTION 6. This resolution shall take effect immediately upon passage and approval by the Anchorage Municipal Assembly.

PASSED AND APPROVED by the Anchorage Municipal Assembly this
19th day of May, 1998.


Chairman

ATTEST:


Municipal Clerk



Granite View Subdivision

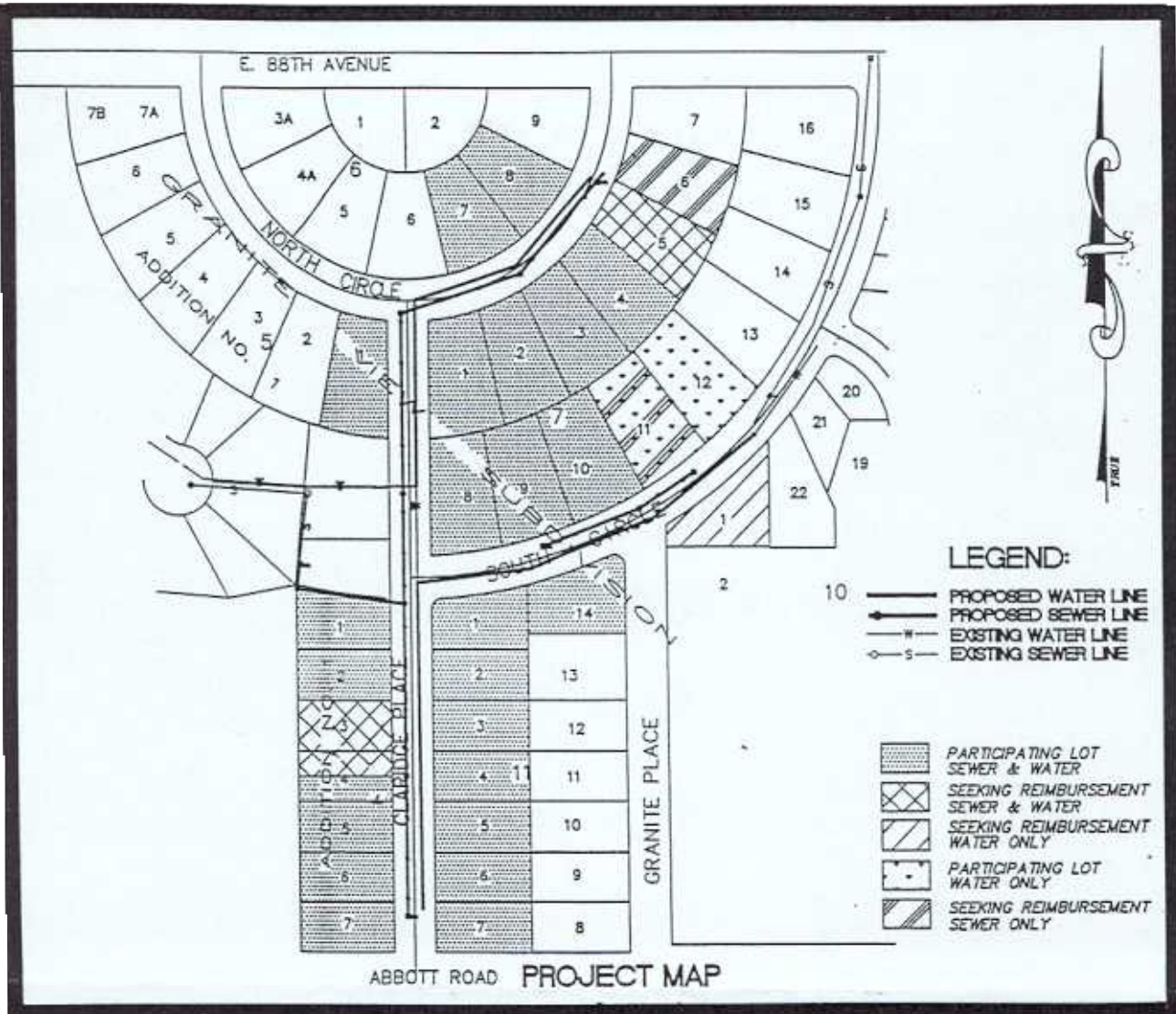
Estimated Sanitary Sewer Assessments

S96-041A

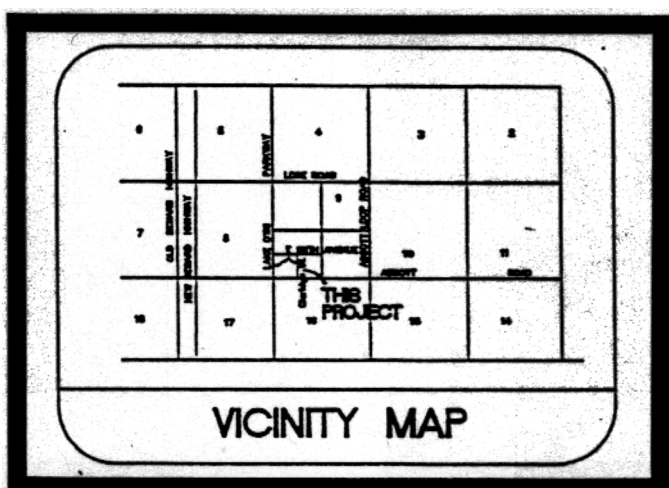
Estimated Rate = \$0.435286
 Trunk Rate = \$0.028900

Tax Code	Block	Lot	Lateral Area	Lateral Assess.	Trunk Area	Trunk Assess.	Total Assess.
014-301-19	4	3	9,995	\$4,350.68	9,995	\$288.86	\$4,639.54
014-301-20	4	N2, 4	4,998	\$2,175.56	4,998	\$144.44	\$2,320.00
014-302-13	7	5	12,830	\$5,584.72	14,375	\$415.44	\$6,000.16
014-302-14	7	6	12,830	\$5,584.72	14,375	\$415.44	\$6,000.16
014-302-22	7	11	12,900	\$5,615.19	14,377	\$415.50	\$6,030.68

(All Parcels S.M., ALASKA)



043951 24- 1999 JL -9 AM 11:30
 ANCHORAGE RECORDING DISTRICT REQUESTED BY MOA



**GRANITE VIEW
 SUBDIVISION
 WATER AND SEWER
 IMPROVEMENTS**

GRID 2334

Granite View Subdivision
Estimated Sanitary Sewer Assessments
S96-041A

Estimated Rate = \$0.435286

Trunk Rate = \$0.028900

Tax Code	Block	Lot	Lateral Area	Lateral Assess.	Trunk Area	Trunk Assess.	Total Assess.	Owner
014-301-19	4	3	9,995	\$4,350.68	9,995	\$288.86	\$4,639.54	BARNARD, Earl R. & Marguerite
014-301-20	4	N2, 4	4,998	\$2,175.56	4,998	\$144.44	\$2,320.00	BARNARD, Earl R. & Marguerite
014-302-13	7	5	12,830	\$5,584.72	14,375	\$415.44	\$6,000.16	GUTHRIE, John B.
014-302-14	7	6	12,830	\$5,584.72	14,375	\$415.44	\$6,000.16	WOODS, Jeffrey J. & Teresa A.N.
014-302-22	7	11	12,900	\$5,615.19	14,377	\$415.50	\$6,030.68	ESSLINGER, John H. & Louise J.